

# FY 2013 MAINTENANCE DREDGING

PROJECT: ATCHAFALAYA RIVER  
HORSESHOE/CREWBOAT CUT  
PROJECT MANAGER: Mike Lowe  
PHONE: (504) 862-1682  
LOCAL SPONSOR: Morgan City Harbor  
Terminal District

## DESCRIPTION OF WORK:

Maintain 20' x 400' channel from the junction of Avoca Island Cutoff Bayou channel to Atchafalaya Bay (with an additional 2' of advance maintenance).

HISTORICAL FREQUENCY: Annual

LAST DREDGED: 2011

TYPE OF DREDGE: Cutterhead

ESTIMATED QUANTITY: TBD

ESTIMATED COST: TBD

ADVERTISE: Dec 2012

OPEN BIDS: TBD

AWARD: TBD

START WORK: TBD

DURATION: 40 days per Contract

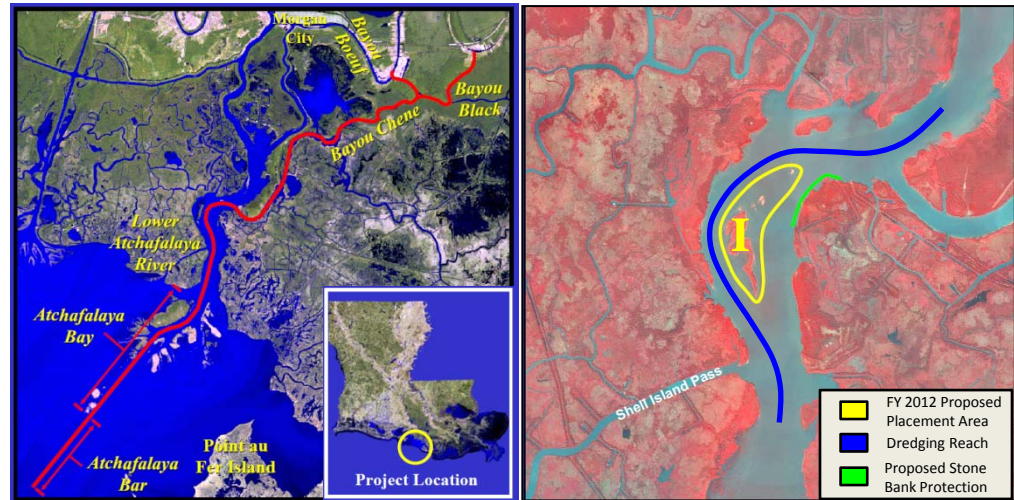
DREDGING REACH: Horseshoe/Crewboat Cut

DISPOSAL AREA: Atchafalaya River

DISPOSAL TYPE: Open Water (Wetland Development)

REMARKS: Dredged material discharged at Disposal Area "I" located between the Atchafalaya River Navigation Channel and Crewboat Cut.

# ATCHAFALAYA RIVER HORSESHOE/CREWBOAT CUT



**AUTHORITY:** The River and Harbor Act of 1968, House Document 155, 90<sup>th</sup> Congress, 1<sup>st</sup> Session, authorized the following plan of improvement:

- 1) a channel 20 feet deep over a bottom width of 400 feet from the vicinity of the U.S. Highway 90 crossing over Bayou Boeuf to the Gulf of Mexico via the Gulf Intracoastal Waterway (GIWW), Bayou Chene, the Avoca Island-Cutoff Bayou Drainage channel, the Lower Atchafalaya River, and the existing project across Atchafalaya Bay to the 20 foot depth contour in the Gulf of Mexico, except that the width in Bayou Boeuf would be reduced to not less than 300 feet where necessary because of industrial developments on both sides of the bayou, and
- (2) a 20 by 400 foot channel in Bayou Black and the GIWW from the major shipyard on Bayou Black at U.S. Highway 90 to Bayou Chene.

NEPA DOCUMENTATION	FONSI	PUBLIC NOTICE	WATER QUALITY CERTIFICATION	WQC DATE
FEIS O&M	15-Jan-74	30-Aug-74		12-Dec-78
FEIS O&M	4-Feb-77			
SIR #5 Advance Maintenance & Allowable Overdepth	25-Jul-84			
EA#93 Open Water Disposal LAR	22-Sep-89		WQC 890929-03	7-Feb-90
EA#108 Disposal Sites LAR	21-Sep-90	1-Oct-90	WQC 900925-08	27-Nov-90
EA#149 Additional Disposal Areas LAR	17-Apr-96	7-Aug-91 15-Oct-93	WQC 910815-01	9-Oct-91
EA#260 Additional Disposal Areas LAR	25-Jun-97	5-Nov-96	WQC 910815-01*	14-Feb-97
EA# 260-A Additional Disposal Areas LAR	17-Mar-98		WQC 910815-01*	28-Apr-98
EA#260-S Disposal Area Enlargement LAR	26-May-98		WQC 910815-01*	28-Apr-98
EA#286 LAR Mid-Channel Island Disposal Area	12-Nov-99	7-Jul-99	WQC 910815-01*	2-Sep-99
EA# 482 Crewboat Cut Nav. Desig. & Bank Stabilizati	9-Apr-09	29-Jan-09	WQC 090217-01 AI 101235 CER 20090001	11-Mar-09
EA#482-A Crewboat Cut Nav. Desig. & Bank Stabilizati	1-Apr-10			

\* revised Water Quality Certificate

# BENEFICIAL USE OF DREDGED MATERIAL

## ATCHAFALAYA RIVER HORSESHOE/CREWBOAT CUT

Fiscal Year	Contract No.	Disposal Area	Dredging Quantity (CY)	Acres
2001	No Dredging			
2002	02-C-0029	I	1,239,050	25
2003	03-C-0048	I	1,489,342	25
2004	No Dredging			
2005	05-C-0042	I	1,022,655	50
2006	06-C-0181	I	525,693	5
2007	07-C-0081	I	629,716	0
2008	08-C-0085	I	1,024,290	25
2009	No Dredging			
2010-11	10-C-0117	I	1,628,483	10
2011	11-C-0054	I	203,981	10

